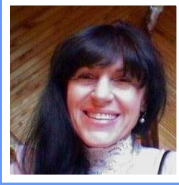


# Caren Neila della Cioppa



P.O. Box 1881 Palmer, Alaska 99645  
Phone: (907) 745-1528  
E-mail: [carendc@gmail.com](mailto:carendc@gmail.com)  
Website: [www.akhabataku.com](http://www.akhabataku.com)

## **EDUCATION: Northrop Institute of Technology**

Bachelor of Science Electronics Engineering

## **University of Alaska Anchorage**

Associate Applied Science Paramedic Technology

Associate Applied Science Aircraft Maintenance Technology

Bachelor of Arts Japanese/Russian Languages

## **CERTIFICATES:**

Certificate of Authority to Take Weather Observations (NWS)

Certificate of Training as Public Weather Spotter (NWS)

Airline Transport Pilot Certificate (Multi-Engine Land)

Commercial Pilot Certificate (Single-Engine land and Sea, Multi-Engine Sea)

Certified Flight Instructor (Single-Engine, Multi-Engine, Instrument)

Aviation Mechanic (Airframe and Powerplant)

Third Class FAA Medical

<b>AVIATION EXPERIENCE:</b>	Total Time	4080	Hours
	Alaska	4020	Hours
	Pilot In Command	3864	Hours
	Night	374	Hours
	Instrument	400	Hours
	Instruction	690	Hours
	Tailwheel	1776	Hours
	Turbine	150	Hours
	Multi-Engine	1057	Hours

## **EMPLOYMENT:**

### **Diversified Management Solutions (12/2013- Present)**

FAA Contract Aviation Weather Observer, Deadhorse Airport, Prudhoe Bay, Alaska. Use of ASOS equipment

### **Pacific Weather, Anchorage, Alaska (1/2005-12/2013)**

FAA Contract Aviation Weather Observer, Merrill Field Airport, Anchorage, Alaska and Deadhorse Airport, Prudhoe Bay, Alaska. Use of ASOS equipment

### **IBEX Weather, Anchorage, Alaska (1/2008-2/2013)**

FAA Contract Aviation Weather Observer, Merrill Field Airport, and Anchorage International Airport, Anchorage, Alaska. Use of ASOS equipment

### **Avmet Services, Anchorage, Alaska (1/2005-10/2008)**

FAA Contract Aviation Weather Observer, Anchorage International Airport, Anchorage, Alaska. Use of ASOS equipment

### **Quality Asphalt Paving, Anchorage, Alaska (9/2003-11/2004)**

Traffic Control at road construction sites.

### **Jolt Construction, Big Lake, Alaska (9/2003-11/2003)**

Traffic Control at road construction sites.

**Cape Smythe Air Service, Barrow, Alaska (4/02-6/02)**

135 Commuter Pilot on Arctic Slope of Alaska: C-207, BE-99

**AeroMap, Anchorage, Alaska (2/00 - 7/00)**

Aerial Survey Pilot: C-310

**F.S. Air Service, Anchorage, Alaska (9/89 - 1/91)**

135 Charter Pilot: PA-31, PA-601P, BE-8T

**Wilbur's Flight Operations, Anchorage, Alaska (9/87 - 9/89)**

135 Charter Pilot: PA-34, C-401/402, C-172, PA-28R

Flight Instructor: Multi-Engine, Single-Engine, Instrument

**Vernair, Anchorage, Alaska (11/86 - 5/87)**

Flight Instructor: Multi-Engine, Single-Engine, Instrument

**Precision Aviation, Palmer, Alaska (5/86 - 9/87)**

Flight Instructor/Flight Seeing Pilot

**Mat-Su Bush Flying, Palmer, Alaska (1/86 - 5/86)**

Flight Instructor/Flight Seeing Pilot

**Municipality of Anchorage, Anchorage, Alaska (2/84 - 2/99)**

Paramedic/Firefighter

**PROFESSIONAL AFFILIATIONS:**

Institute of Electrical and Electronic Engineers

Civil Air Patrol

National Association of Flight Instructors

Medallion Foundation

International Association of Women Pilots (99's)

Aircraft Owners and Pilots Association

Alaska Airmen's Association

National Ski Patrol